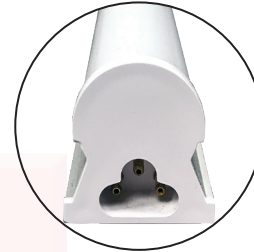


# LED INTEGRATED T8 LIGHT FIXTURE

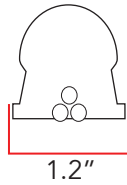
AC Direct Line Voltage



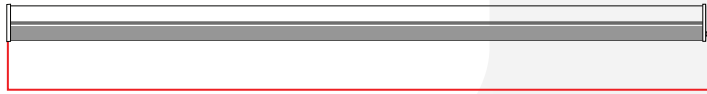
The LED Integrated Light Fixture is easily installed and provides instant lighting with a plug and play feature. These are mainly used for commercial fluorescent tube replacement.



## DIMENSIONS



1.2"



48" / 96"

## CERTIFICATIONS



## FEATURES

- UL Type B
- High efficiency constant current driver system
- Instant start without flickering, humming, or RF interference
- Minimize labor and recycling costs
- Excellent light distribution and uniformity
- Energy savings up to 70%
- 5 Year Manufacturer's Warranty

## COMMON TECHNICAL DATA

Color Temperature	3000K-5000K
Beam Angle	120° Frosted
CRI	>80
Operation Temperature	-20°C to 50°C
Lumen Efficiency	More than 125 LPW
Input Voltage	100-277VAC
Frequency	50-60Hz
Power Supply Efficiency	90%
Rated Life	50,000 hours
Power Factor	More than 0.99
LED Type	SMD 2835
Housing	Aluminum & Plastic

## WARRANTY

This product has a warranty for a period of 5 years from the date of purchase. The warranty is invalid in the case of improper installation, tampering, or removal of the Q.C. date label. Installation in an improper working environment or installation not according to the current edition of the National Electric Code also invalidates the warranty. Should this product fail during the warranty period, it will be replaced free of charge, subject to correct installation and return of the faulty unit. James® does not accept responsibility for any installation costs associated with the replacement of this product. This warranty is in addition to the statutory rights in the country of purchase. James® reserves the right to alter specifications without prior notice.

# LED INTEGRATED T8 LIGHT FIXTURE

AC Direct Line Voltage



## PRODUCT SPECIFICATION

Product Number	Wattage	CCT	Length (in)	Lumens	Housing
ZY-T8-12W1200 BINS Fixture	12W	3000K-5000K	48"	1560	Aluminum & Plastic
ZY-T8-15W1200 BINS Fixture	*15W	3000K-5000K	48"	2075	Aluminum & Plastic
ZY-T8-18W1200 BINS Fixture	*18W	3000K-5000K	48"	2475	Aluminum & Plastic
ZY-T8-22W1200 BINS Fixture	22W	3000K-5000K	48"	2788	Aluminum & Plastic
ZY-T8-40W2400 BINS Fixture	40W	3000K-5000K	96"	5200	Aluminum & Plastic

\* Custom Order

## ORDERING GUIDE

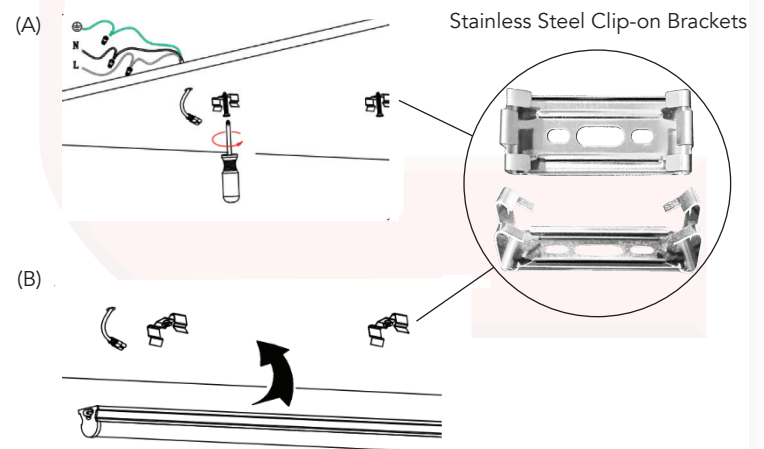
ZY	T8	12W/15W/18W/ 22W/40W	1200/2400	B	I	N	S	Fixture	3000K-5000K
Company Code	Housing Type	Wattage	Length	2835 LED	Internal Driver	Non-Dimmable	Single-End	Type	CCT

## INSTALLATION INSTRUCTIONS

Retrofit Procedure:

1. Turn OFF power to the fixture at the breaker panel before installation.
2. Screw in Stainless steel clips to the ceiling or wall (A).
3. Snap fixture into clips and ensure they are secured in place (B).
4. Connect the tubes- male end into female end.
5. Once all tubes are connected, connect the power cord to the single tube.

Note: One power connector can connect up to 20pcs for ≤22W.  
One power connector can connect up to 10pcs for ≥22W.



## CAUTION

- Risk of electric shock- make installation with gloves.
- These fixtures are not intended for use with emergency exit fixtures, emergency exit lights or battery backup devices.
- LED fixture is powered from one end (Single-ended power).
- These fixtures are not to be used with a light dimmer.
- If the fixture exhibits undesirable operation (i.e. buzzing, flickering, etc.), immediately turn off power and remove the lamp from luminaire and contact manufacturer.
- Do not install an LED fixture with a ballast and/or starter- they must be removed prior to installation.
- Do not make mass installation before sample testing.